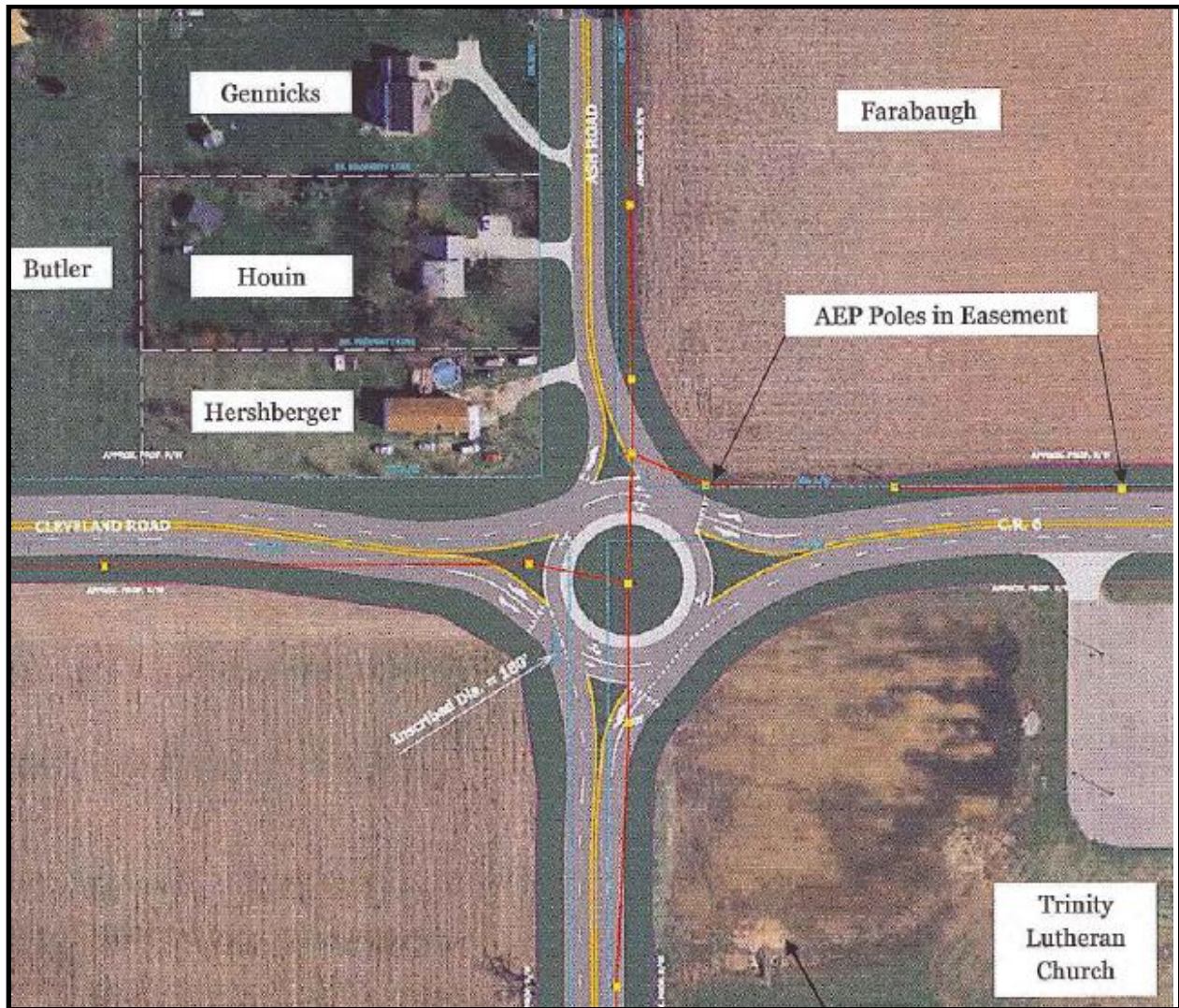


Roundabout Construction at CR6 and Ash Rd



Elkhart County Project Manager: Katie Niblock

Design: R/W Armstrong

Scope: The project is a joint effort between Elkhart County and St. Joseph County. The project will involve upgrading the four-way stop controlled intersection to a modern roundabout. This will include roadway reconstruction and drainage improvements. Plans will be ready for the 2013 construction season.

Information/Updates:

April 2011	Scoping meeting and negotiating design contract
June 2011	Field Survey completed. Environmental coordination/documentation began.
July – Oct 2011	Preliminary field check plans underway.